

Pullman Berlin Schweizerhof

Casual chic and modern design with the typical « cheeky » style of Berlin.

With more than 377 rooms and suites, 18 conference rooms, the newly conceptualized restaurant BLEND – berlin kitchen & bar as well as a Fit and Spa Lounge with the city's' biggest hotel pool the hotel is ideally located in the heart of Berlin, the most important sights and places are only a few steps away.

Specials:

New designed hotel
Biggest indoor pool in Berlin
Sleeping rooms with view over Berlin and the Zoo
Meeting rooms with terrace for coffee breaks & BBQ's
Airport Berlin Tegel > 20 min; Airport Berlin Schönefeld > 40 min; Main Station 10 min

Work & Play

Perfect balance between peak performance and personal wellbeing.

The Junction @ Pullman

is an innovative lobby experience that combines work and play, rest and recreation, Business pursuits and social connections.



What makes us unique?

BLEND berlin kitchen and bar Melting Pot Cuisine

- Mix of flavors, scents and culinary styles of Berlin
- Our motto: seasonal, regional & different!



FIT & SPA Lounge

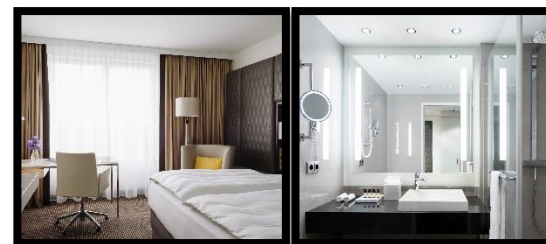
With the biggest indoor pool in Berlin!

- Finish sauna, steam bath & 24/7 Fitness
- Relaxing area & sun terrace



❖ 377 modern sleeping rooms and suites with view over Berlin and the Zoo

- 4 categories:
Superior & Deluxe room
Junior & Deluxe Suites



❖ 18 meeting rooms with natural daylight, 1610 sqm.

- Ballroom, 686 sqm with terrace and car accessible
- 14 flexible meeting rooms on one level with terrace for coffee breaks & BBQ's

